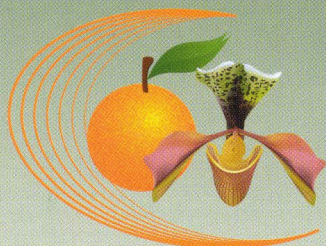


# Ki Jing Batai Lyngkot Ba Bha Na Ka Bynta Ka Thung Phan



DIRECTORATE OF HORTICULTURE  
MEGHALAYA



## JINGBATAI

- (1) KITYNRAI PHAN: Kufri Jyoti, Kufri Megha, Kufri Giriraj, etc.
- (2) KI JAIT SYMBAI: Ia ki symbai dei ban thied na ki jaka balah ban shaniah, khamtam eh na ki jaka sorkar, Dei ban jied bad thied ia ki symbai ba la pynshisha bad ia kum kine ki jait symbai dei ban kylliang ha man laka 3-4 snem khnang ban kiar na ka jingpyndonkam ia ki symbai ba lah sep.

Thung ia ki symbai kiba na kajuha ka jait. Ki symbai ki dei ban long kiba lait na ki jingpang ne khniang, khamtam na ka jingpang Virus. Ki symbai jong ki Phan ki dei ban khia kumba 30-50g bad ki dei ban don 3-4 tylli ki shylluit khmat kiba bha.

- (3) KA PORTHUNG: Ia u phan lyeur dei ban thung ha u bnai February (Rymphang) haduh ki bynta ba pdeng jong u bnai March (Lber). Katba ia u phan synrai dei ban thung ha ka taiew ba khatduh jong u bnai August (Nailar) haduh ka taiew ba nyngkong jong u bnai September (Nailur).

- (4) KA RUKOM AI SBOH:

- (a) FYM. (Well Decomposed Farmyard Manure) (Eit Masi): Ia kane ka jait sboh dei ban ai kumba 10-15 ton ha man la ka shi hectare. Dei ban ai kumba 15-20 ton ka sboh niut ne eit masi na ka bynta ka jaka kaba heh shi hectare. Ka sboh niut ne eit masi ka iarap ban pynbha ia ka khyndew bad pynneh ia ka jingsngem hapoh jong ka.

- (b) SBOH DAWAI: Donkam ruh ban ai sa ia ka sboh dawai kum ka sboh shini, sboh dpei, bad ka sboh shiyap. Khleh lang ka sboh shini(110kgs), bad ka sboh dpei (750kgs) sboh shiyap (60-80 kg) shwa ban thung .Ha ka por ai khyndew dei ban ai sa 110 kg ka sboh shini ha ka shi hectare. Ha ka por ai sboh dei ban ai shwa ki dawai sboh ki ba la khlehleng nangta bud sa ka sboh eit masi sa buh sa u phan symbai na jrong bad sa tap khyndew.

(5) KA RUKOM THUNG:

- (a) Dei ban thung ia kita ki phan kiba lah ban pynmih ia ki phan kiba bha ym dei ban thung ia ki phan kiba mih shniuh.
- (b) Ia u phan dei ban thung ha ki lain ba la shna ha ki sharing lum khnang ban iada na ka jingshah rong noh ha ka khyndew. Ka jingjngai na kawei ka lain sha kawei pat ka dei ban long kumba 50cm bad ka jingjngai na u phan ka dei ban long 20-25cm.
- (k) Hadien ba la shna ia ki nur ban thung phan, ai ia ka sboh dawai, nangta sa ai sa ia ka FYM( eit Masi) bad khatduh eh sa buh ia u phan. Ym dei ban shah ba ki sboh dawai kin iabit bad u jingthung. Dei ban tap noh ia u phan da ka khyndew tang shu dep thung bad shna sa ki rud nur kiba jrong kumba 8-10cm.
- (d) Wat pyndonkam ban thung ia ki phan kiba la shah ot, namar ki jingpang kin sa ioh rung na uwei sha uwei pat.

(6) KI JINGTREI:

- (a) Thiew Phlang: Ia ka jingthiew phlang la leh ha shwa ban ai khyndew. Hadien kane phi lah ban ai da ki dawai pyniap kynbat kum ka Glycel/ 2-4D (Agan) kumba 5 shamoit sha ha man la ka shi pump ka um.
- (b) Ka jingai khyndew: Ka long kawei pat ka kam kaba donkam, kaba dei ban leh haba u jingthung u la jrong kumba 10-15cm. Dei ban ai pahuh ka khyndew ia u phan. Ka jingai khyndew pahuh ia u phan ka don ar tylli ki jingmyntoi.
  - (i) Ka pynmih khambun ki phan kiba bha.
  - (ii) Ka pynduna ruh ia ka jingshah pynjot ha ki khniang.
- (k) Ka jingot/ Weng noh: (1) Ha ka por thung ia u phan dei ban da khmih bniah khnang ban ioh weng noh ia baroh ki jingthung kiba don jingpang kum ka jingpang iapiong,

jingmih rong, jingsti, jingdkhai noh, jingtlor noh bad jinghap noh ki sla, khamtam haba ia u jingthung la thung khnang ban ioh symbai.

- (2) Peit bniah ia ki khniang bad jingpang bad synreit dawai lada l donkam.
- (3) Rat bad weng noh ia ki jingthung ba l don jingpang naduh ba ki dang rit.

(7) KA JINGSYNSHAR/ JINGIADA NA KI KHNIANG:

(a) U' Niang Khung (cutworm):

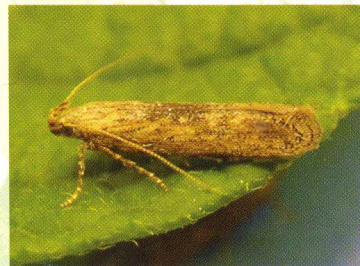
Kine ki jait khniang tda rong iong bthuh jyrngam ki mih na kawei ka jait thapbalong. Ban iada na une u khniang jingpang ha ka por ba thung ia u phan ber ryngkat bad ki sboh dawai pyniap khniang



kum ka Furadon, Triumpcard ne kiwei kiwei ki jait dawai powder lane Spray ia u jingthung da ka dawai khniang Dursban/Danuban 20 EC kumba 5-6 shamoit sha haka shi pump ka um.

(b) Ka Thapbalong (Tubermoth):

Kine ki dei ki jait thapbalong kiba rit ba sawbthuh ka rong jong ki sner. Une u jait khniang u pynjot ia u jingthung ha ki ar rukom



1. Da kaba bam bad sam thliew nur ia ki sla.
2. U bam ia ki khmat jong u phan ha ki lyngkha ne ha ki jaka buh. Ban iada na une u khniang jingpang ai khyndew bad tep ia ki phan kiba mih shabar. Phi lah

ruh ban synreit ia u dawai Monocrotophos (Crotocelel) 40EC. kumba 3-4 shamoit sha haka shi pump ka um. Ia u Phan ba ba buh ha Kudam phi lah ban tap da u sla Lantana (Soh Pang Khlieh) bala ot rit bad tyrkhong bha kumba shi inchi ka jingbren.

(k) Niangbyrnai (White Grub):

Kine ki dei kito ki niang tda kiba long lam lieh kum ka dud bad ki mih na kito ki jait khniang kyndad. Ki pynjot ia u jingthung da kaba bam ia ki



thied jong u. Ban iada na une u jait khniang puh jylliew bad kylla ia ka khyndew ban mih ki khniang shabar. Phi lah ruh ban ber da ka Dawai Diafuran 3G shi shamoit sha ha ka shi thliw ha ka por thung lane spray da ka Endosulfan lane Quinalphos @ kumba 5-6 shamoit sha haka shi pump ka um.

(d) Ki khniang ksi (Aphids):

Kine ki jait khniang kiba rit ki long shi kynhun bad snoh ha u jingthung khamtam ha ki bynta kiba dang lung. Ban iada na kine ki khniang buh ia



ki tin ba la ai rong stem bad buh um ha ki. Buh ia kine ki tin ha man la ki kyntoit. Synreit da ka dawai Conphidor 4-5 shamoit sha ha ka shi pump ka um. Sa spray biang hadin 10-15 sngi

KI JINGPANG:

(a) Ka Jingpang lapiong (Late

Blight): Ka long ka jingpang ba kynrei bad pynjolor ia u Jingthung ha ki jaka lum. Ban iada na kane ka Jingpang jied bha ia u Phan shwa ban buh



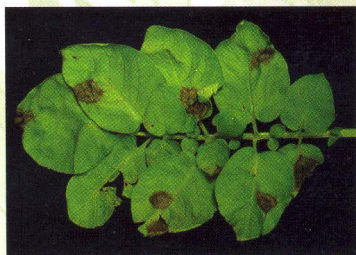
symbai. Ai khyndew bad tep shapoh ia baroh ki phan ba mih shabar ha ki lyngkha. Jied bad thung tang kito ki jait symbai ba mih bad ba lah ban kham shan ia kane ka jingpang kum u Kufri Jyoti, Kufri Megha, Kufri Kanchan, Kufri Giriraj.

Spray da ka dawai Indofil M45 lane ka Antracol kumba 8 shamoit ha ka shi pumpka um hadien ba la ioh slap u ba jur bad haba ka bneng kala sdang syaid. Mait, weng noh bad thang noh ia u jingthung u ba la ioh pang ar taiew shwa ban tih ia u phan.

Lada donkam synreit da ka dawai Mancozeb 75WP 8(phra) shamoit ha ka shi tin umphniang sharak ka um. Synreit shen hadien ba la ioh u slap ba jur bad haba ka bneng ka sdang syaid.

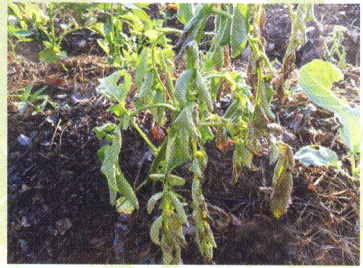
Mait, weng noh lane thang ia ki jyntang ba la iap kumba ar taiew shwa ban tih ne khlong ia u.

- (b) Ka Jingpang thoh dak ki sla (Early Blight): Kane ka Jingpang kam da kynrei hynrei ka long ka jingpang kaba pynjolor lada u Jingthung u ioh kem iaka. Kane ka Jingpang ka kham



- kynrei haba u Jingthung um ioh iaka jingbam kaba biang khamtam ia ka jingbam na ka sboh shini. Ban iada na kane ka Jingpang pyndonkam da ki symbai kiba ym don jingpang. Ai Sboh bad Sboh Dawai kaba biang kat kum bala batai haneng. Synreit da ka Sboh Dawai Shini ba la khleh 36 shamoit sha ha ka shi pump ka um.
- (k) Ka Jingpang lap Kyniur (Bacterial Wilt): Kane ka Jingpang ka la sdang kynrei ha kine ki jaka jong ngi. Ki dak kiba paw ha kane ka Jingpang ki long ka jingran ne ring tyrkhong ki sla. Ban iada na kane ka jingpang jied bad thung tang ia kito ki

jait symbai ki ba bha. Mar ia iohi ia u jingthung/tyndrai u ba la ioh ia kane ka jingpang mar mar phi dei ban tih/weng noh ia u jynthung bad baroh ki phan kiba don ha u ne u tyndrai ryngkat bad ka



khyndew nangta sa tep noh ha kawei ka thliw kham pajih na ka jaka thung phan. Nangta sa ber da u Bleaching Powder bad ka Urea shi shi shamoit sha lane ber da ka dawai Dithane ne Indofil shi shamoit sha ha kito ki jaka ba mih ki tyndrai phan ba la la ktah da kane ka jingpang.

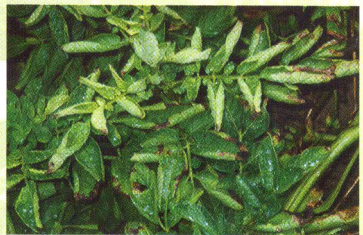
- (d) Ka Jingpang Bampong (Canker) : la kane ka jingpang lah ban ithuh da ki dak ba u phan u sniewdur, at pyrshen, sohkhruh bad long thliw. Ban iada na kane ka jingpang



thung bujli ia ki jaka rep phan da kiwei ki jingthung kum u riwhadem, Phrisbin, Motor bad kiwei kiwei. Pynkhui ia ka jaka rep na ki kynbat ne niut.

- (e) Ki Jingpang Mangkariang(Virus): Kine ki long ki jait jingpang ba la ktah jur ia ka jingmih phan. Kiba kham julor napdeng kine ki long:

- (1) Ka Jingpang Kdor Sla (Leaf Roll): Kane ka jingpang ka pynlong ia ki sla ba kin khain bad kdor shalor, ki jingthung ki long blad, lyngkot bad



ieng beit, kham hadien ki sla ki kylla stem bad tyrkhong. Kane ka jingpang ka lah ban ktah shwa ia ki sla kiba

na trai lada thung da ki symbai kiba don lypa kane ka jingpang. Ha lum ia kane ka jingpang la pynphriang da ki khniang ksi kiba long ki nongkit ia ka jingpang. Kine ki jait khniang ki roi bha haba ka suinbneng ka syaid bad rang. Shisien ba la kem kane ka jingpang u jingthung um lah shuh ban khie khlieh bad u Phan uba mih um long shuh uba heh hynrei uba shu pdeng bad uba rit.

- 2) Ka Jingpang Mosaic: Kane ka dei kawei pat ka jingpang ba la sdang kynrei. Ka sdang nyngkong ha ki sla kum ki dak thoh blad jyrngam ha ki dur bapher bad u jingthung u lyngkot bad um san shuh. Ban iada na kane ka jingpang thung da ki symbai ba bha ki bym don jingpang.



Synreit da ka dawai ban iada na ki khniang ksi kumba la bthah haneng namar ba kitei ki jingpang ki wan lyngba kine ki khniang.



LA PYNMIH DAKA  
OPHIS JONG U HORTICULTURE DEVELOPMENT OFFICER  
EXPRIMENTAL AND RESEARCH STATION (POTATO FARM)  
UPPER SHILLONG

Under the Scheme:

- Tuber Crop Development Scheme 2012-13
- 13<sup>th</sup> Finance Commission 2011-12